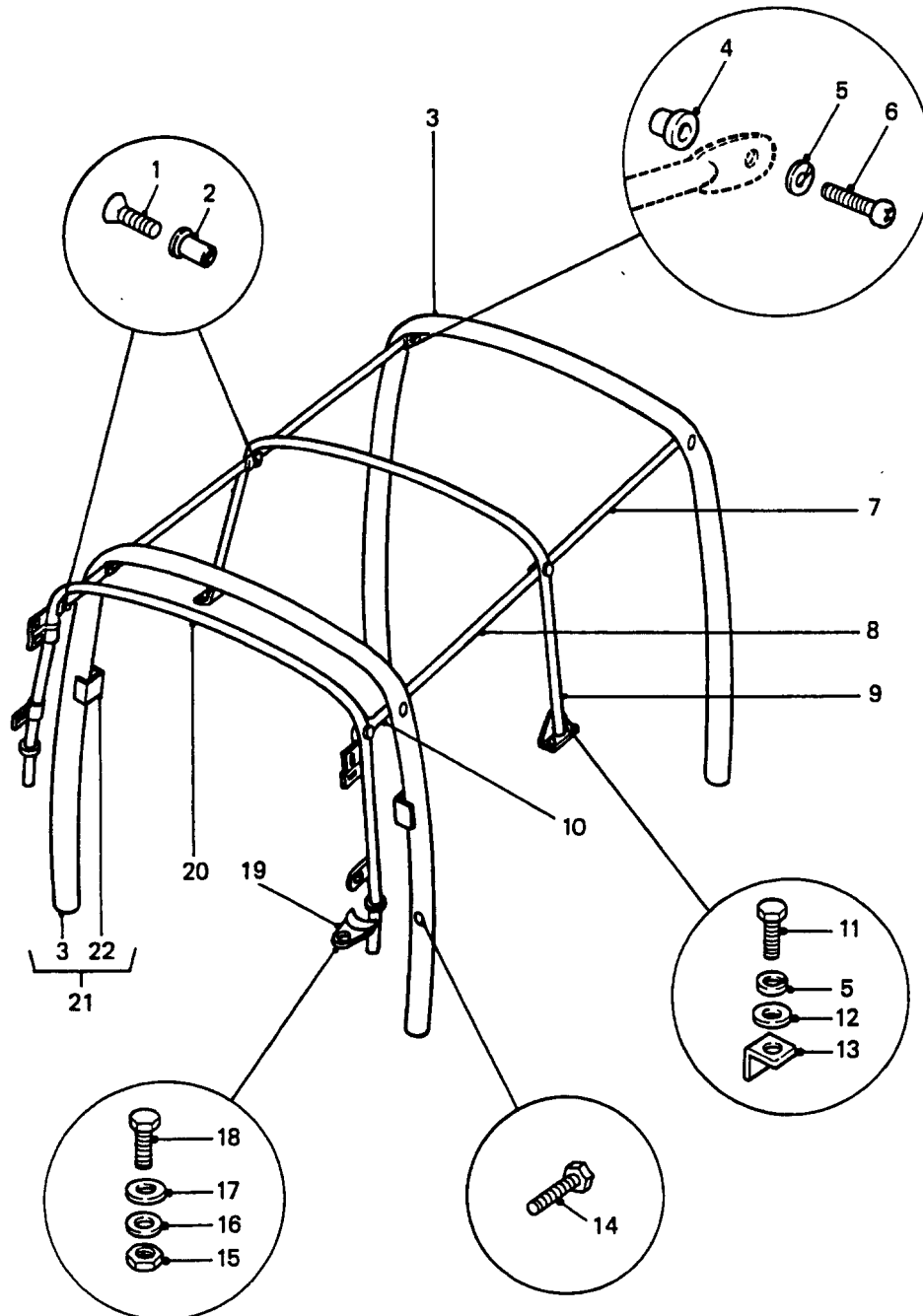


ROLL CAGE AND CANOPY BOWS

GROUP SR
TITLE ROLL CAGE AND CANOPY BOWS

| ITEM NO | DESIGNATION | NSN MANUFACTURER CODE/PART NO SUPPLIER CODE/PART NO | NO OFF | U O | E X | L* M* H* |
|--|---|---|-----------|--------|--------|----------------|
| 001 | BOLT, MACHINE ISO M, STEEL, 6G THD CLASS, 6 MM THD DIA, 1 MM PITCH, 20 MM LG, ZINC PLATED | 5306 99-663-5061 U1030/FS106201 Z5394/FS106201 | 4EA | | X | LMH |
| 002 | NUT, PLAIN, BLIND RIVET ISO METRIC, STEEL, ZINC COATED, 6 BY 1.0 MM (ALSO PART OF SR 008 AND SR 020) | 5310 99-138-4838 U1030/NN106021 Z5394/NN106021 | 4EA | | X | LMH |
| 003 | BOW, VEHICULAR TOP REAR ROLL CAGE (QTY 1, ALSO PART OF SR 021) | 2540 66-128-5012 Z5394/HYG5664 Z5394/HYG5664 | 2EA | | X | LMH |
| 004 | NUT, PLAIN, BLIND RIVET 6 MM DIA COURSE THD, 30 MM LG, STEEL, ZINC PLATED | 5310 66-128-5543 Z5394/MM106301 Z5394/MM106301 | 8EA | | X | LMH |
| 005 | WASHER, LOCK, SINGLE COIL, 6 MM ID | 5310 99-208-6458 U1030/WL106001L Z5394/WL106001L | 4EA | | X | LMH |
| 006 | SCREW, MACHINE ISO METRIC, STEEL, PAN HD, CROSS REC DRIVE, ZINC COATED, 6 MM BY 20 MM LG | 5305 99-796-7536 U1030/SE106201 Z5394/SE106201 | 4EA | | X | LMH |
| 007 | TUBE, HOODSTICK, REAR 1005 MM LONG, C/W 25 MM FLATS EACH END ALSO HOLES DRILLED 10 MM DIA, GALVABOND STEEL TUBE 19 MM DIA | 2540 66-128-5014 Z5394/HYG1658 Z5394/HYG1658 | 2EA | | X | LMH |
| 008 | TUBE, HOODSTICK, INTERMEDIATE STEEL TUBE, 19 MM O/A DIA, 835 MM LG, C/W 25 MM FLATS EACH END, ENDS DRILLED 10 MM DIA | 2540 66-128-5015 Z5394/HYG1660 Z5394/HYG1660 | 2EA | | X | LMH |
| 009 | BOW, VEHICULAR TOP INTERMEDIATE (INCLUDES SR 002) | 2540 66-128-5017 Z5394/HYG2200 Z5394/HYG2200 | 1EA | | X | LMH |
| 010 | TIE BAR FRONT STEEL, 3 MM THK, 25 MM W, 300 MM LG 8 MM HOLE ONE END, 8 MM W SLOT OTHER END, HOODSTICK | 2540 66-128-5016 Z5394/HYG1659 Z5394/HYG1659 | 2EA | | X | LMH |
| 011 | SCREW, HEXAGON HEAD ISO M, STEEL, ZINC COATED, POINTED, 6 MM BY 20 MM LG | 5305 66-128-4702 Z5394/SR106201 Z5394/SR106201 | 4EA | | X | LMH |
| ISSUE NO: 3 REPAIR PARTS SCALE: 02188 PAGE NO: 382 | | | | | | |

* GRADE OF REPAIR (LIGHT, MEDIUM OR HEAVY)

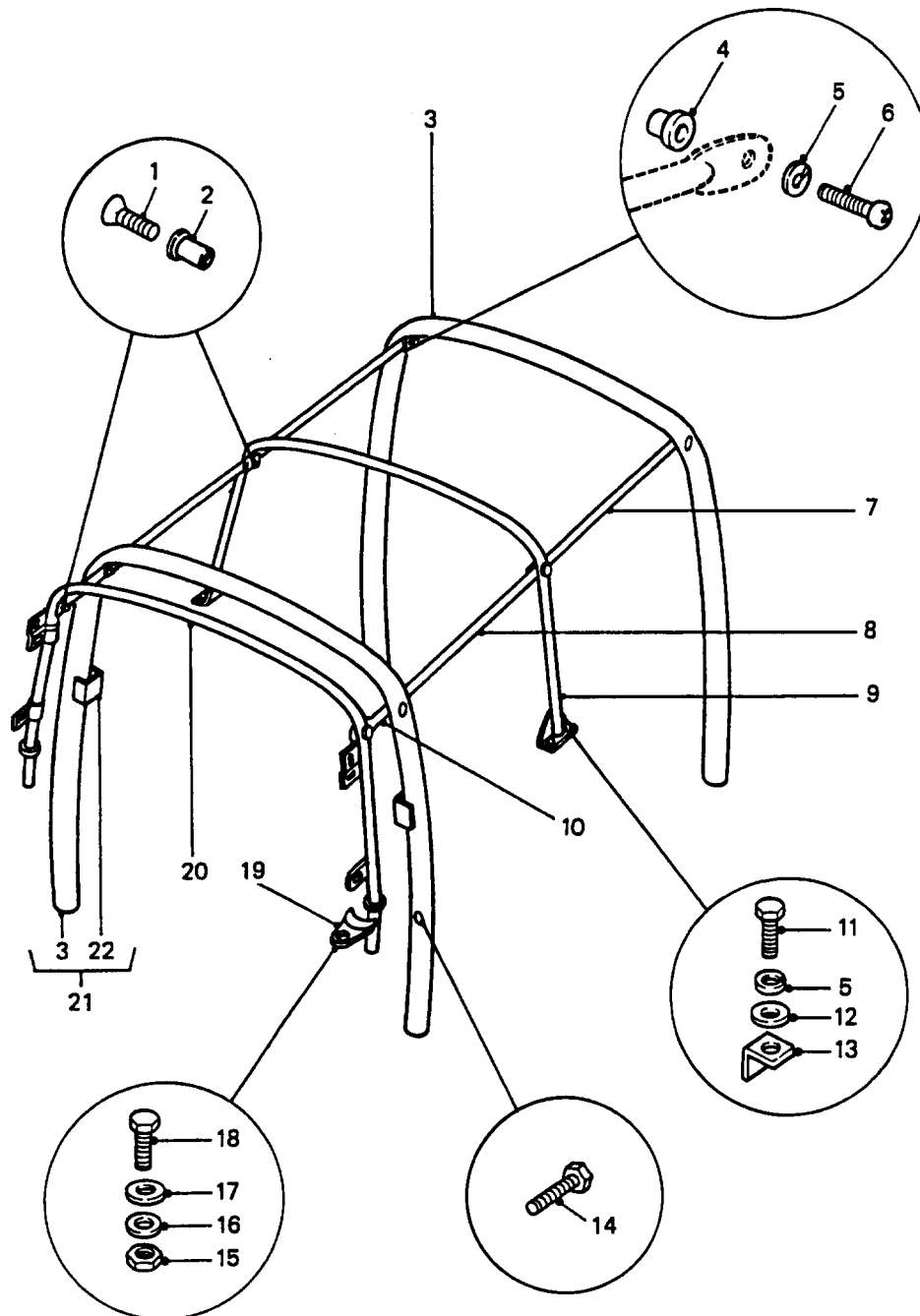


ROLL CAGE AND CANOPY BOWS

GROUP SR
TITLE ROLL CAGE AND CANOPY BOWS

| ITEM NO | DESIGNATION | NSN MANUFACTURER CODE/PART NO SUPPLIER CODE/PART NO | NO OFF | U O | R X | L* M* H* |
|--|--|---|-----------|--------|--------|----------------|
| 012 | WASHER, FLAT RD, 6 MM ID | 5310 99-977-1694 U1030/MRC5527 25394/MRC5527 | 4EA | | X | LMH |
| 013 | NUT, PLAIN, PLATE | 5310 66-128-4703 Z5394/MRC9603 Z5394/MRC9603 | 4EA | | X | LMH |
| 901 | WASHER, FLAT STEEL, SQUARE 8 MM ID, 25 MM SQ, 1 MM THK, W/ADHESIVE | 5310 66-128-4704 25394/MYH3285 Z5394/MYH3285 | 4EA | | X | LMH |
| 014 | SCREW, CAP, HEX HD, ISO M, 6G, STEEL, ZINC PLATED, 8 MM-1.25 MM PITCH, 30 MM LG O/A | 5305 99-122-5368 U1030/FS108301 Z5394/FS108301 | 4EA | | X | LMH |
| 015 | NUT, HEX, 8 MM ID, COARSE, STEEL, MEDIUM TENSILE, ZINC PLATED | Z5394/NT108041 Z5394/NT108041 | 2 | | | |
| 016 | WASHER, LOCK SPRING, STEEL, SINGLE TURN, SQUARE SECTION, ZINC PLATED, 8 MM BOLT SIZE | 5310 99-138-9227 U1030/WL108001L Z5394/WL108001L | 2EA | | X | LMH |
| 017 | WASHER, FLAT, ISO M, STEEL, RD, ZINC PLATED, 8 MM ID, 17 MM OD, 1.60 MM THK | 5310 99-122-6475 U1030/WB108051 Z5394/WB108051 | 2EA | | X | LMH |
| 018 | SCREW, FLANGE METRIC, STEEL, ZINC PLATED, M8 BY 25 MM LG | 2520 99-277-6018 U1030/FS108251 Z5394/FS108251 | 2EA | | X | LMH |
| 019 | BRACKET, CLAMPING, HOOD STICK BRACKET, CLAMPING | 2540 99-849-8380 U1030/304301 Z5394/R304301 | 2EA | | X | LMH |
| 020 | BOW, VEHICULAR TOP FRONT (INCLUDES SR 002) | 2540 66-128-5020 Z5394/HYG2926 Z5394/HYG2926 | 1EA | | X | LMH |
| 021 | BOW, VEHICULAR TOP FRONT ROLL CAGE (INCLUDES SR 023 AND QTY 1 OFF SR 003, ALSO PART OF SR 902) | 2540 66-128-5021 Z5394/HYG5663 Z5394/HYG5663 | 1EA | | X | LMH |
| 022 | ANCHORAGE, SEAT BELT, ROLL CAGE TUBE. (USE SR 021) | /NIL /NIL | 2 | | | |
| ISSUE NO: 3 REPAIR PARTS SCALE: 02188 PAGE NO: 383 | | | | | | |

* GRADE OF REPAIR (LIGHT, MEDIUM OR HEAVY)



ROLL CAGE AND CANOPY BOWS

GROUP SR
TITLE ROLL CAGE AND CANOPY BOWS

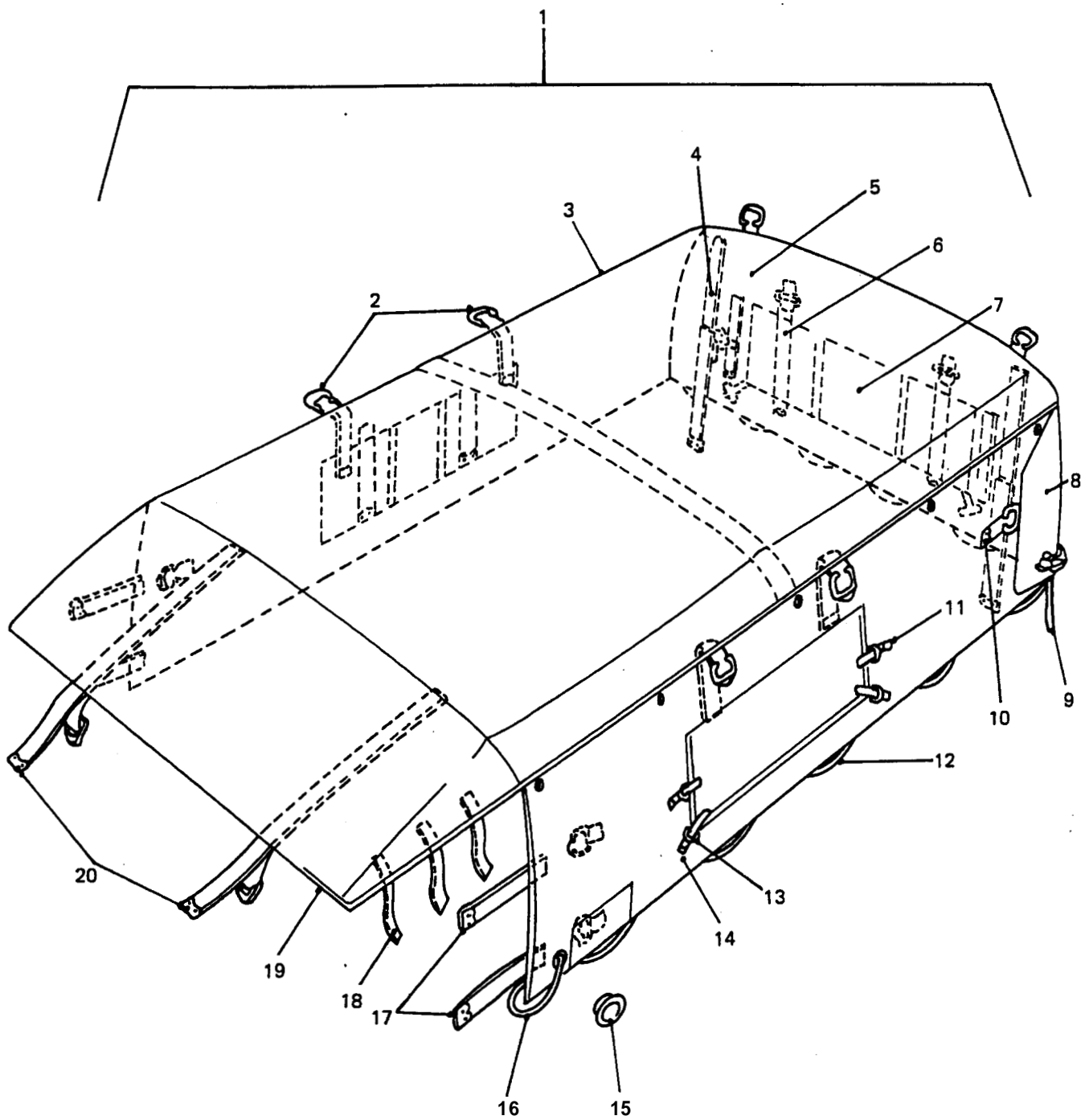
| ITEM NO | DESIGNATION | NSN MANUFACTURER CODE/PART NO SUPPLIER CODE/PART NO | NO OFF | U | E | L* |
|------------|---|---|-----------|---|---|----|
| | | | | O | X | M* |
| | | | | I | P | H* |
| 902 | KIT, ROLL OVER PROTECTION, AS PER EMEI VEH G107-2, ISSUE 2, LESS HEAD RESTRAINTS AND INCLUDING ORIGINAL ROLL TUBE (INCLUDES SR 022, MODIFY VIDE EMEI VEH G 107-2) | I2540 66-128-6009 Z5394/HYG5824 25394/HYG5824 | 1KT | | A | MH |

ISSUE NO: 3

REPAIR PARTS SCALE: 02188

PAGE NO: 384

* GRADE OF REPAIR (LIGHT, MEDIUM OR HEAVY)



CANOPY

GROUP SRA
TITLE CANOPY

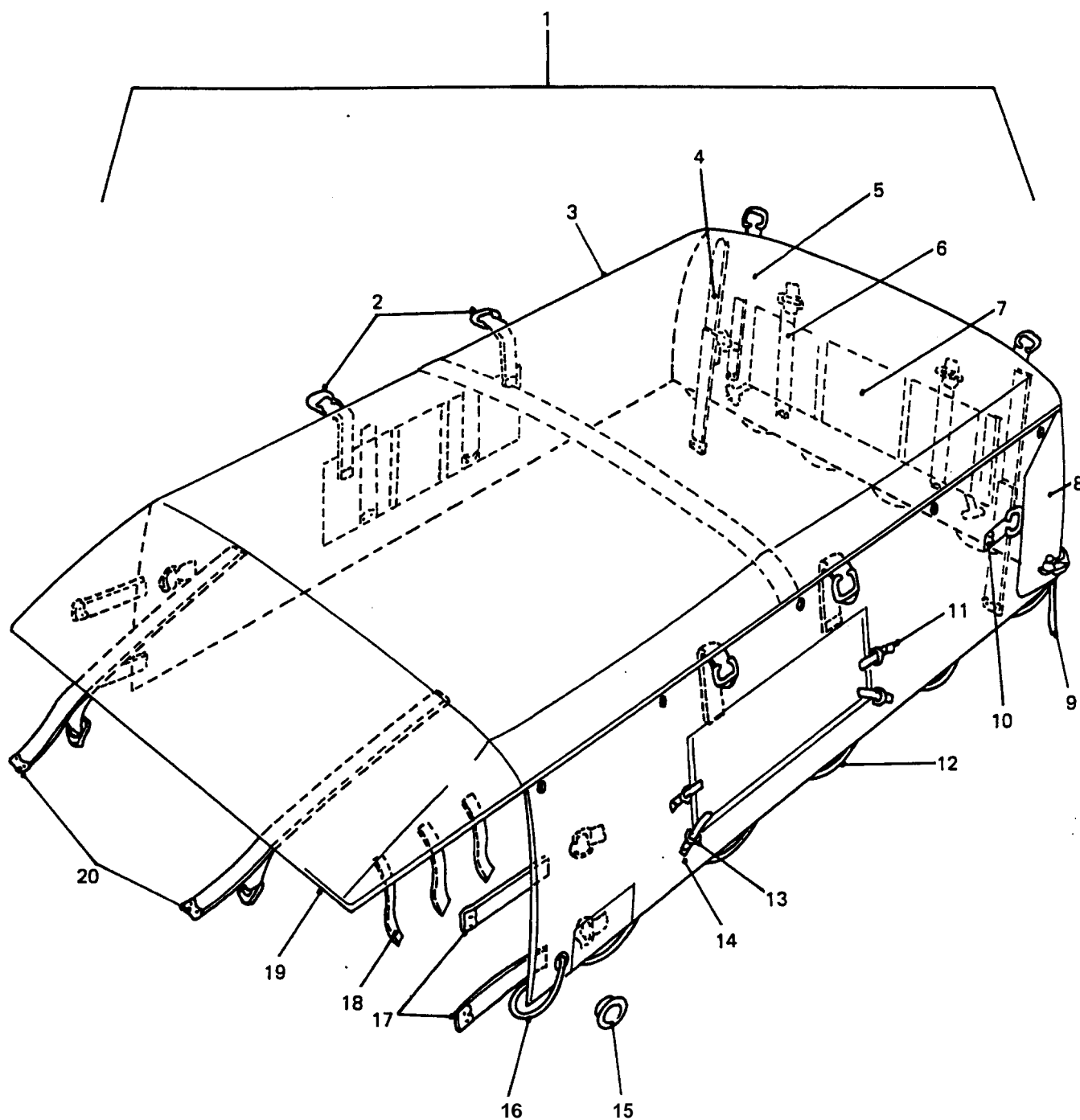
| ITEM NO | DESIGNATION | NSN MANUFACTURER CODE/PART NO SUPPLIER CODE/PART NO | NO OFF | U O | E X | L* M* H* |
|---------|---|---|-----------|--------|--------|----------------|
| 001 | COVER, FITTED, VEHICULAR BODY COTTON DUCK, CAMOUFLAGED (INCLUDES SRA 002 TO SRA 020) | 2540 66-128-4941 Z5394/HYG3030 Z5394/HYG3030 | 1 | A | A | LMH |
| 002 | BUCKLE, PLASTIC, GREEN (USE AS REQUIRED) | /NIL /NIL | 1 | | | |
| 003 | PANEL, CANOPY, TOP (USE SRA 001) | /NIL /NIL | 1 | | | |
| 903 | REINFORCEMENT, CANOPY BOW, CENTRE STRUT (USE SRA 001) | /NIL /NIL | 1 | | | |
| 004 | STRAP, WITH BUCKLE, 25 MM WIDE, 1170 MM LG (USE SRA 001) | /NIL /NIL | 4 | | | |
| 902 | BUCKLE (USE AS REQUIRED) | /NIL /NIL | 1 | | | |
| 005 | CURTAIN AND EXTENSION, REAR FLAPS (USE SRA 001) | /NIL /NIL | 2 | | | |
| 903 | REINFORCEMENT, TOP EYELET (USE SRA 001) | /NIL /NIL | 2 | | | |
| 904 | ROPE, REAR FLAP TOP, TERYLENE, 1/2 IN CIRCUMFERENCE, 3230 MM LG (FITTED WITH SRA 905 AND SRA 906 BOTH ENDS) | Z5394/HYG3075 Z5394/HYG3075 | 1 | | | |
| 905 | END, ROPE, CLIP, 3/4 IN, "L", MATERIAL 24 STEEL (USE SRA 001) | /NIL /NIL | 1 | | | |
| 006 | STRAP, WITH BUCKLE, 25 MM WIDE, 240 MM LG (USE SRA 001) | /NIL /NIL | 2 | | | |
| 007 | FLAP, REAR (USE SRA 001) | /NIL /NIL | 1 | | | |
| 008 | CURTAIN, REAR FLAP (USE SRA 001) | /NIL /NIL | 2 | | | |

ISSUE NO: 3

REPAIR PARTS SCALE: 02188

PAGE NO: 385

* GRADE OF REPAIR (LIGHT, MEDIUM OR HEAVY)

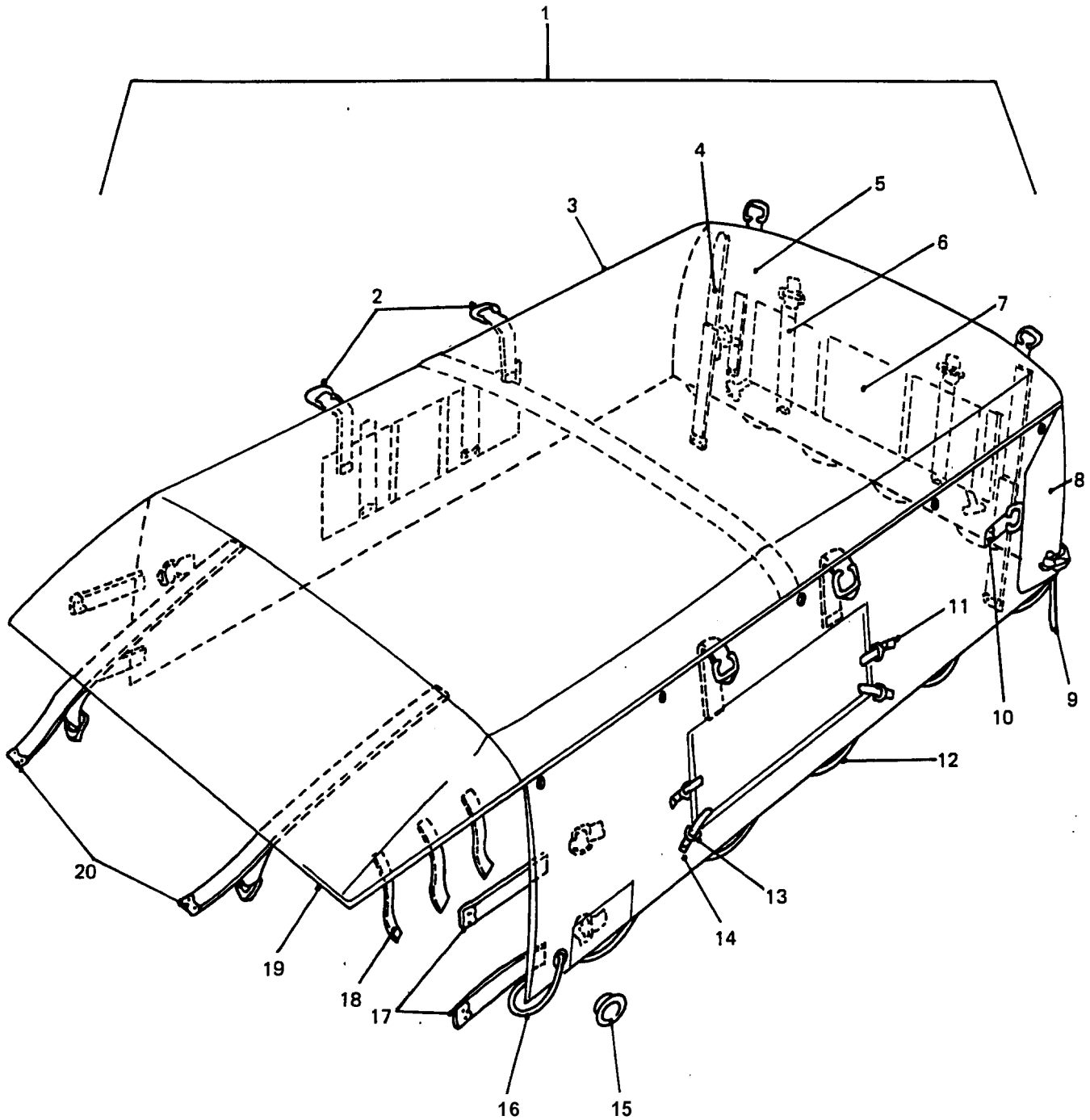


CANOPY

GROUP SRA
TITLE CANOPY

| ITEM NO | DESIGNATION | NSN MANUFACTURER CODE/PART NO SUPPLIER CODE/PART NO | NO OFF | U O I | E X P | L* M* H* |
|--|---|---|-----------|-------------|-------------|----------------|
| 009 | ROPE, REAR FLAP, LOWER, CANOPY TO TAILGATE, 1/2 IN CIRCUMFERENCE, TERYLENE, GREEN, 2100 MM LG (INCLUDES SRA 905 AND SRA 906) | Z5394/HYG3072 25394/HYG3072 | 1 | | | |
| 906 | ROPE, SPLICE CLIP, 3/4 IN, "L", MATERIAL 24 STEEL (USE SRA 001) | /NIL /NIL | 2 | | | |
| 010 | STRAP, WITH BUCKLE, 25 MM WIDE, 235 MM LG (USE SRA 001) | /NIL /NIL | 2 | | | |
| 011 | STRAP, WITH BUCKLE, 25 MM WIDE, 240 MM LG (USE SRA 001) | /NIL /NIL | 4 | | | |
| 012 | ROPE, BODY SIDE, LONGITUDINAL, TERYLENE, 1/2 IN CIRCUMFERENCE, GREEN, 2930 MM LG (INCLUDES SRA 905) | Z5394/HYG3073 Z5394/HYG3073 | 2 | | | |
| 013 | STRAP, WITH BUCKLE, 25 MM WIDE, 235 MM LG (USE SRA 001) | /NIL /NIL | 6 | | | |
| 014 | CURTAIN (USE SRA 001) | /NIL /NIL | 2 | | | |
| 015 | EYELET, SELF CUTTING, BLACK, BRASS, 0.38 IN ID | Z5394/MYH143 Z5394/MYH143 | 32 | | | |
| 907 | EYELET, BLACK BRASS, 0.44 IN ID | Z5394/MYH144 Z5394/MYH144 | 32 | | | |
| 016 | ROPE, CANOPY TO " B" PILLAR, TERYLENE, GREEN, 550 MM LONG FITTED WITH 150 MM LG, 2 MM DIA (INCLUDES SRA 905) | /NIL /NIL | 2 | | | |
| 015 | STRAP, WITH BUCKLE, 25 MM WIDE, 155 MM LG (USE SRA 001) | /NIL /NIL | 4 | | | |
| 018 | STRAP, WITH BUCKLE, 20 MM WIDE, 230 MM LG. (USE SRA 001) | /NIL /NIL | 6 | | | |
| ISSUE NO: 3 REPAIR PARTS SCALE: 02188 PAGE NO: 386 | | | | | | |

* GRADE OF REPAIR (LIGHT, MEDIUM OR HEAVY)

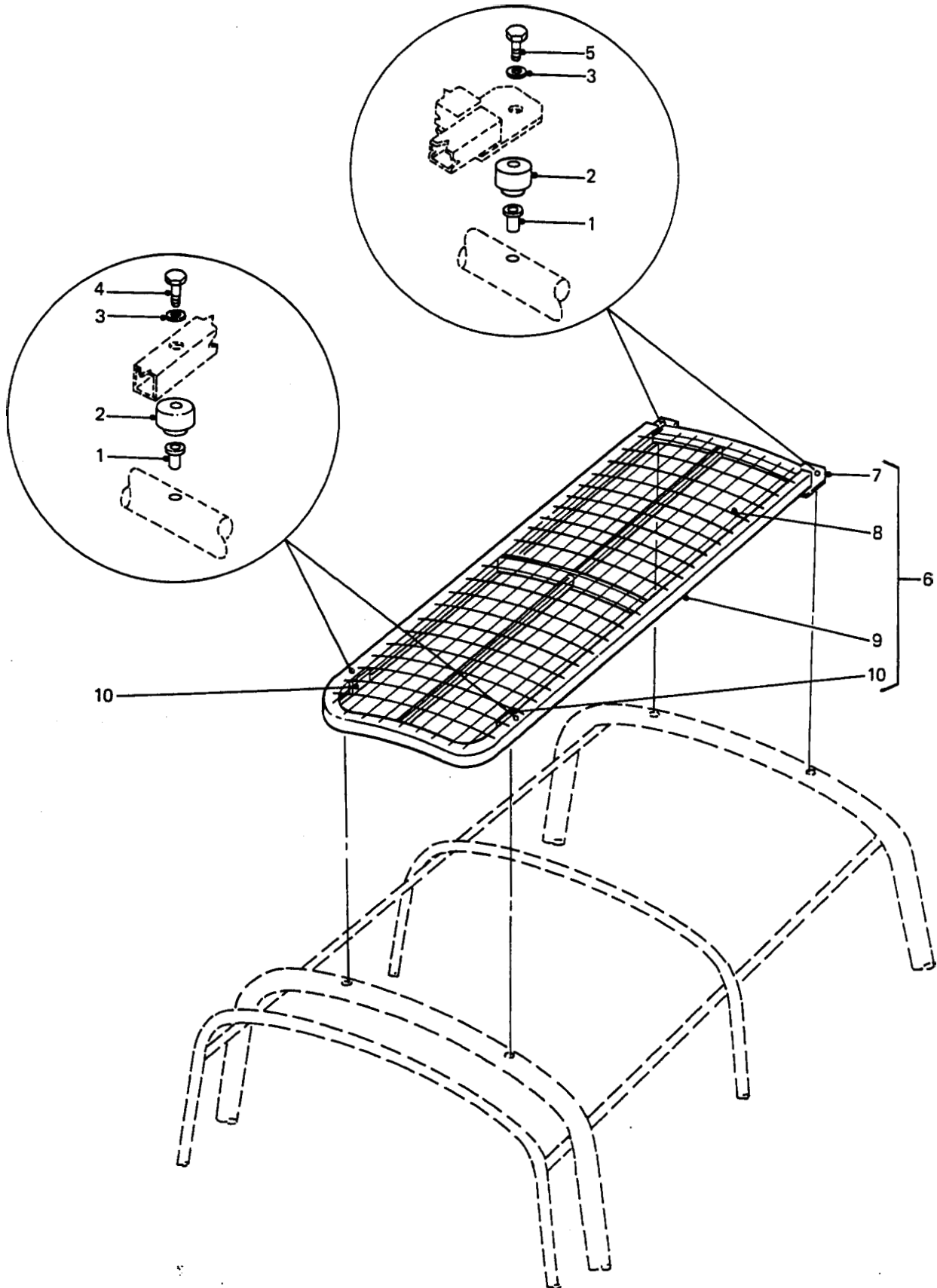


CANOPY

GROUP SRA
TITLE CANOPY

| ITEM NO | DESIGNATION | NSN | | NO OFF | U O I | E X B | L* M* H* |
|--|--|--------------|--------------|-----------|-------------|-------------|----------------|
| | | MANUFACTURER | CODE/PART NO | | | | |
| | | SUPPLIER | CODE/PART NO | | | | |
| 019 | FRONT, VALANCE PIECE (USE SRA 001) | /NIL /NIL | | 1 | | | |
| 020 | WEBBING, TERYLENE, GREEN, WOVEN, 25 MM W, 15 MM THK, 410 MM LG | /NIL /NIL | | 2 | | | |
| ISSUE NO: 3 REPAIR PARTS SCALE: 02188 PAGE NO: 387 | | | | | | | |

* GRADE OF REPAIR (LIGHT, MEDIUM OR HEAVY)



CAMOUFLAGE STOWAGE FRAME

GROUP SRH
TITLE CAMOUFLAGE STOWAGE FRAME

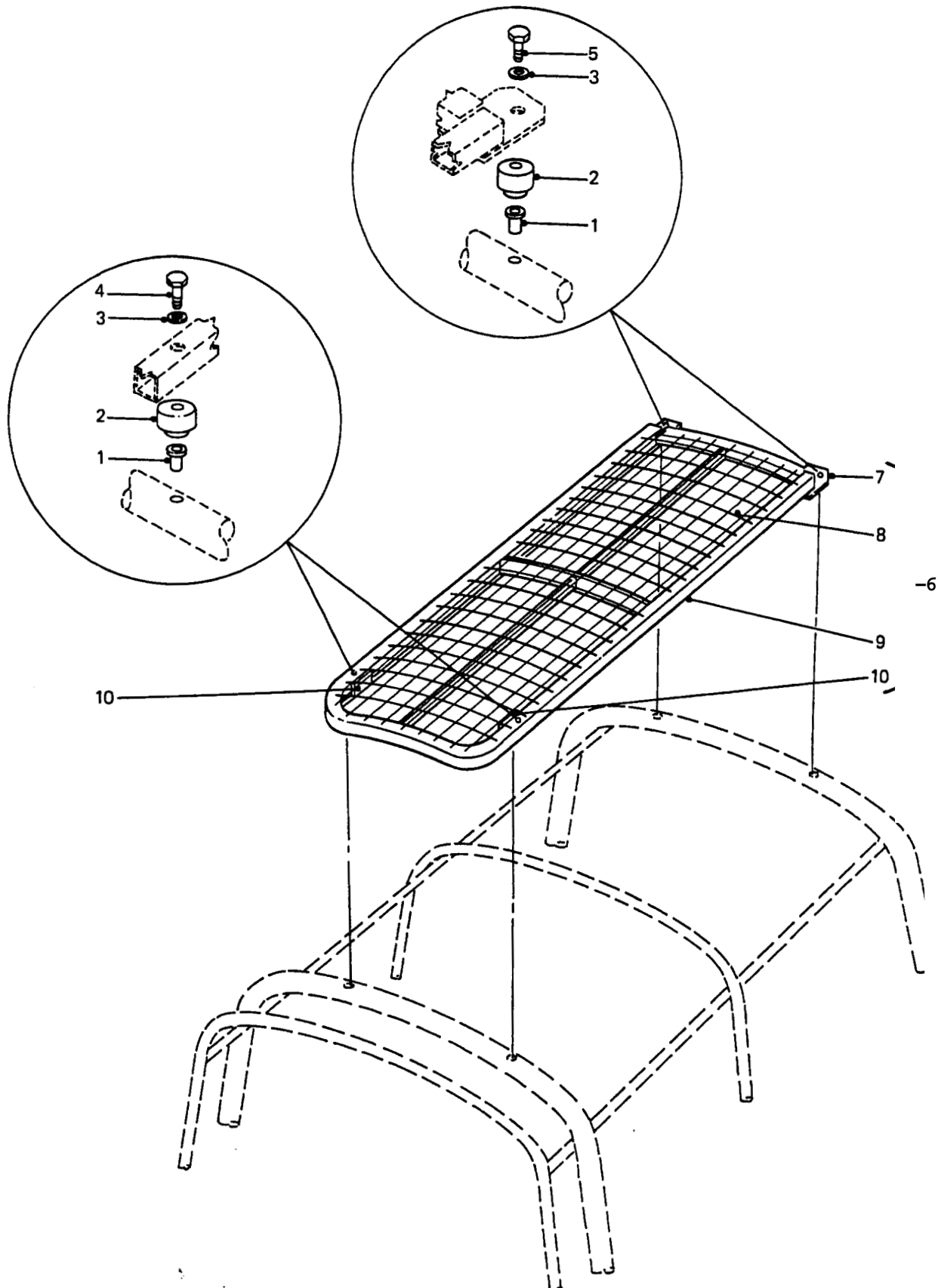
| ITEM NO | DESIGNATION | NSN MANUFACTURER CODE/PART NO SUPPLIER CODE/PART NO | NO OFF | U O | E X | L* M* H* |
|---------|--|---|-----------|--------|--------|----------------|
| 003 | NUT, PLAIN, BLIND RIVET 8 MM COARSE THREAD, 16 MM LG (ALSO PART OF SRH 006) | 5310 99-772-5133 U1030/MM108301 Z5394/MM108301 | 4 | EA | X | LMH |
| 002 | MOUNT, RESILIENT, RUBBER, CAMOUFLAGE STOWAGE FRAME (ALSO PART OF SRH 006) | 66 128 5936 24690/110-032-082 Z5394/MYH3383 | 4 | | | |
| 003 | WASHER, FLAT STEEL, ZINC COATED, 8.40 MM ID, 25 MM OD, 2 MM THK (ALSO PART OF SRH 006) | 5310 12-154-2190 U1030/WJ108001 Z5394/WJ108001 | 4 | EA | X | LMH |
| 004 | BOLT, MACHINE, PRECISION, HEX HD, 8 MM BY 65 MM LG, ZINC PLATED (ALSO PART OF SRH 006) | U1030/FB108141 Z5394/FB108141 | 2 | | | |
| 005 | SCREW, CAP, HEX HD, 8 MM BY 1.25 MM PITCH, ISO M, 45 MM LG, ZINC PLATED (ALSO PART OF SRH 006) | 5305 99-122-5255 U1030/BH108091 Z5394/BH108091 | 2 | EA | X | LMH |
| 006 | FRAME ASSEMBLY, CAMOUFLAGE NET STOWAGE 1977 MM LG, 910 MM W, STEEL, GALVANISED TO AS 1650, C/W FITTINGS (INCLUDES SRH 001 TO SRH 005 AND SRH 007 TO SRH 010) | 2510 66-128-5943 Z5394/HYG3390 Z5394/HYG3390 | 1 | AY | A | LM |
| 007 | PLATE, MOUNTING, 65 MM BY 50 MM, 1 BY 22 MM DIA HOLE, 5 MM THK, MILD STEEL (USE SRH 006) | /NIL /NIL | 2 | | | |
| 008 | WELDMESH, 50 MM BY 75 MM MESH BY 4 MM ROD, 1924 MM LG, 90 MM W (USE AS REQUIRED, ALSO PART OF SRH 006) | Z0094/WB23B4 Z0094/WB23B4 | 1 | | | |
| 009 | FRAME, 25 MM BY 25 MM RHS, 2 MM THK, 8.5 MM LG, TUBELINE 350 (USE AS REQUIRED, ALSO PART OF SRH 006) | /NIL /NIL | 1 | | | |
| 010 | PLATE, REINFORCEMENT, 75 MM BY 25 MM, 3 MM THK, MILD STEEL (USE SRH 006) | /NIL /NIL | 2 | | | |

ISSUE NO: 3

REPAIR PARTS SCALE: 02188

PAGE NO: 388

* GRADE OF REPAIR (LIGHT, MEDIUM OR HEAVY)

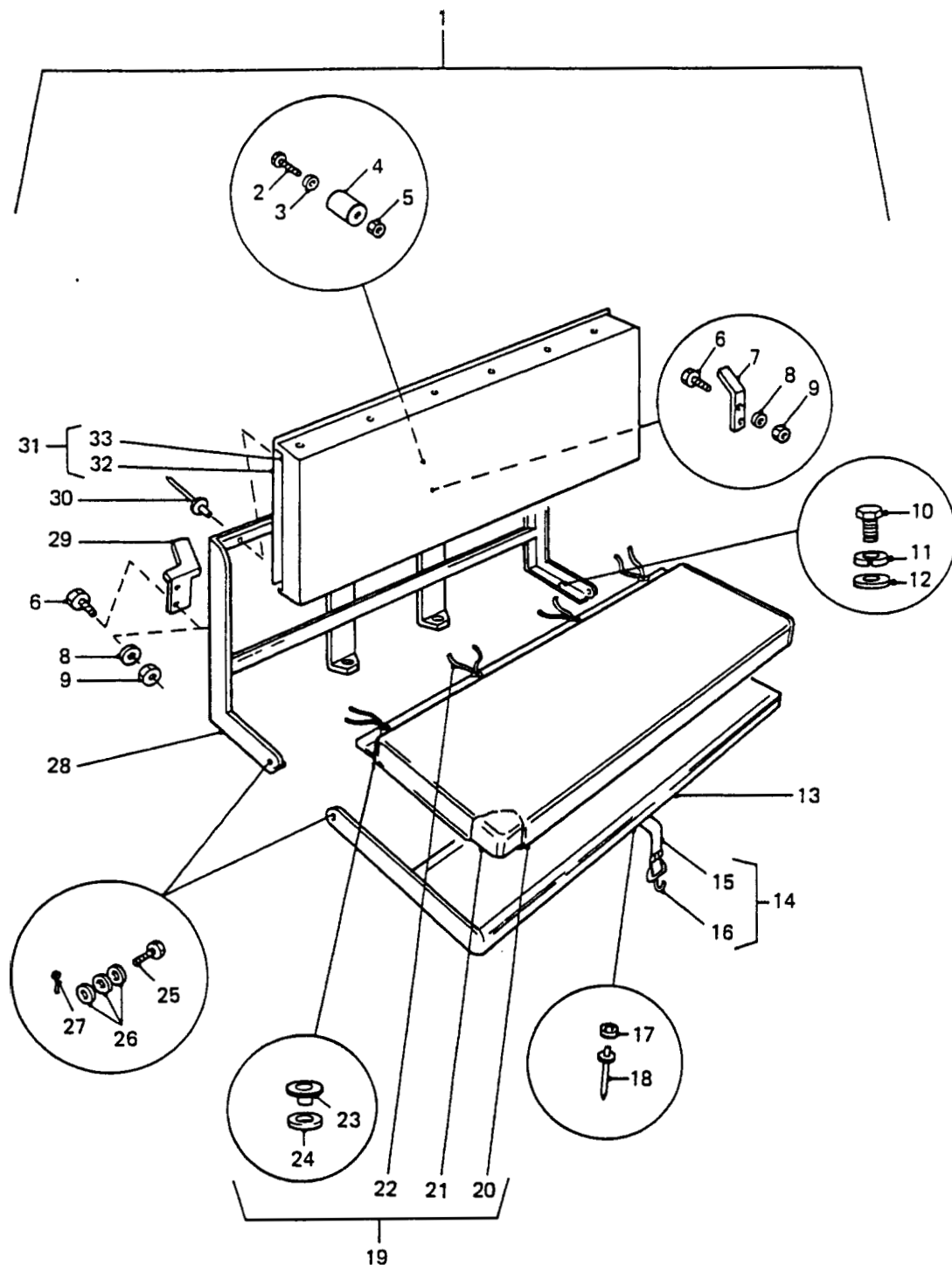


CAMOUFLAGE STORAGE FRAME

GROUP SRH
 TITLE CAMOUFLAGE STOWAGE FRAME

| ITEM NO | DESIGNATION | NSN MANUFACTURER CODE/PART NO SUPPLIER CODE/PART NO | NO OFF | U | E | L* |
|------------|----------------------------------|---|-----------|---|---|----|
| | | | | O | X | M* |
| | | | | I | P | H* |
| 901 | NUT (USED TO REPLACE SRH 001) | Z5394/NH108401 Z5394/NH108401 | 4 | | | |

* GRADE OF REPAIR (LIGHT, MEDIUM OR HEAVY)



REAR INWARD FACING SEATS

GROUP SS
TITLE REAR INWARD FACING SEATS

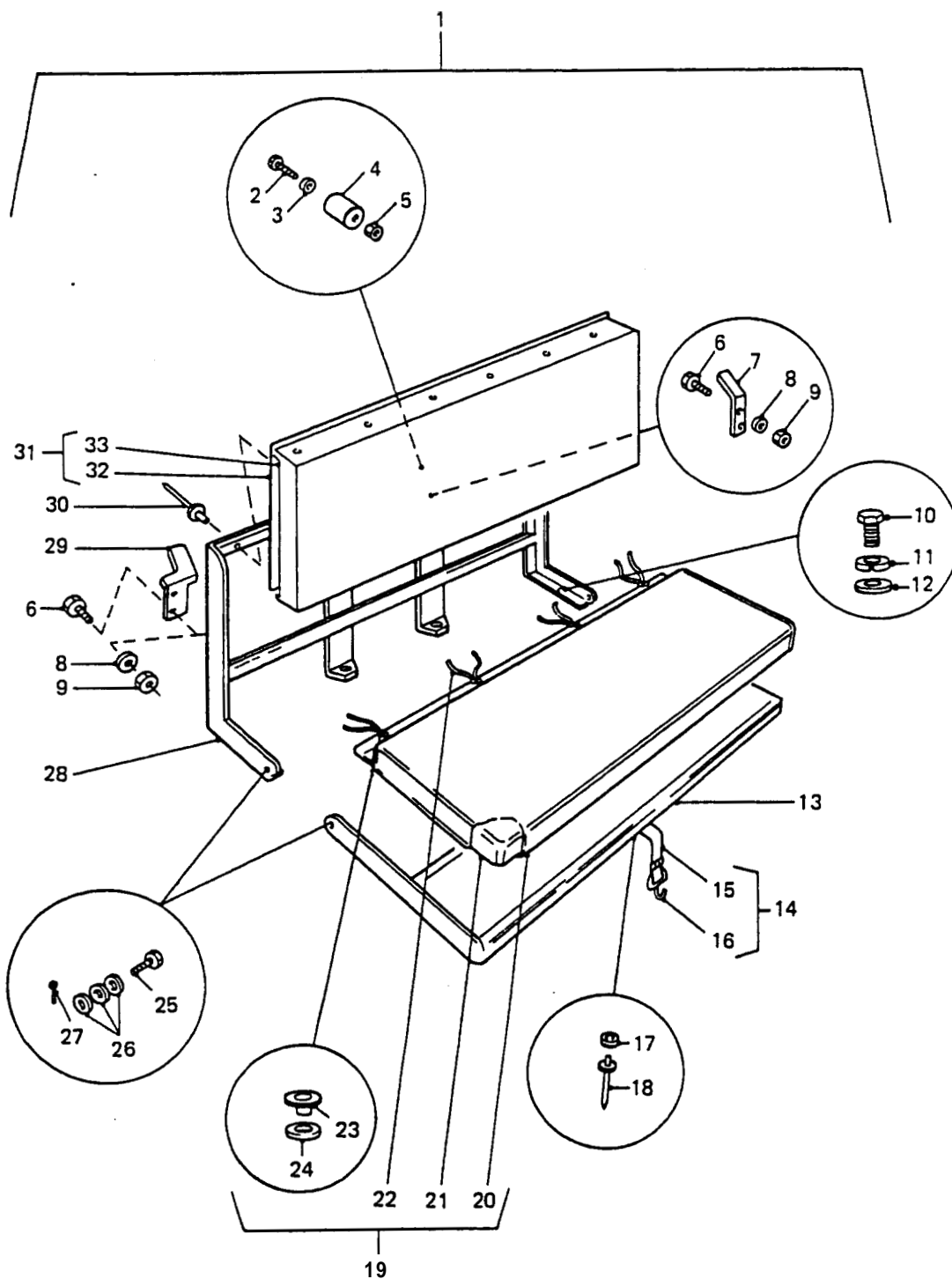
| ITEM NO | DESIGNATION | NSN MANUFACTURER CODE/PART NO SUPPLIER CODE/PART NO | NO OFF | U O | S X | L* M* H* |
|---------|---|---|-----------|--------|--------|----------------|
| 001 | FRAME AND SQUAB ASSEMBLY, REARSEAT, LEFT HAND (INCLUDES SS 002 TO SS 009, SS 013, SS 014 TO SS 018, SS 025 TO SS 028, SS 029 AND SS 030 TO SS 033) | Z5394/HYG1715 Z5394/HYG1715 | 1 | | | |
| 901 | FRAME AND SQUAB ASSEMBLY, REAR SEAT, RIGHT HAND (INCLUDES SS 002 TO SS 009, SS 013, SS 014 TO SS 018, SS 025 TO SS 027, SS 903, SS 904 TO SS 033) | Z5394/HYG1714 Z5394/HYG1714 | 1 | | | |
| 002 | SCREW, MACHINE ISO M, STEEL, PAN HD, CROSS RECESS DRIVE, ZINC COATED, 4 MM BY 20 MM LG | 5305 66-128-4705 Z5394/SE104201 Z5394/SE104201 | 8EA | X | | LMH |
| 003 | WASHER, FLAT RD, STEEL, 4 MM BOLT SIZE | 5310 99-122-3031 U1030/WA104001 Z5394/WA104001 | 8EA | X | | LMH |
| 004 | BUMPER, RUBBER | 2540 99-849-9810 U1030/304125 Z5394/R304125 | 8EA | X | | LMH |
| 005 | NUT, PLAIN, HEXAGON | 5310 99-122-6456 U1030/NH104041 Z5394/NH104041 | 8EA | X | | LMH |
| 006 | SCREW, CAP, HEX HD, ISO M, 6G, STEEL, ZINC PLATED, 6 MM PITCH, 16 MM LG | 5305 99-122-5360 U1030/FS106161 Z5394/FS106161 | 16EA | X | | LMH |
| 902 | RUBBER STRIP AT CUSHION FRAME TO REAR BODY WHEEL ARCH BOX | 5330 66-128-5376 Z5394/MUC6123 Z5394/MUC6123 | 2EA | X | | LMH |
| 007 | CLIP, SQUAB FRAME TO CAPPING | Z5394/HYG1712 Z5394/HYG1712 | 6 | | | |
| 008 | WASHER, LOCK STEEL, 6.10 MM ID, 9.70 MM OD, 1.50 MM THK | 5310 99-203-6405 U1030/WM106001L Z5394/WM106001 | 16EA | X | | LMH |
| 009 | NUT, PLAIN, HEXAGON STEEL, 6 MM, ZINC PLATED | 5310 99-122-5295 U0041/NU7-14Y1 Z5394/JLM9687 | 16EA | X | | LMH |
| 010 | BOLT, MACHINE METRIC, STEEL, HEX HD, ZINC PLATED, M10 BY 30 MM LG | 5306 99-122-4911 U1030/FS110301L Z5394/FS110301 | 8EA | X | | LMH |

ISSUE NO: 3

REPAIR PARTS SCALE: 02188

PAGE NO: 390

* GRADE OF REPAIR (LIGHT, MEDIUM OR HEAVY)



REAR INWARD FACING SEATS

GROUP SS
TITLE REAR INWARD FACING SEATS

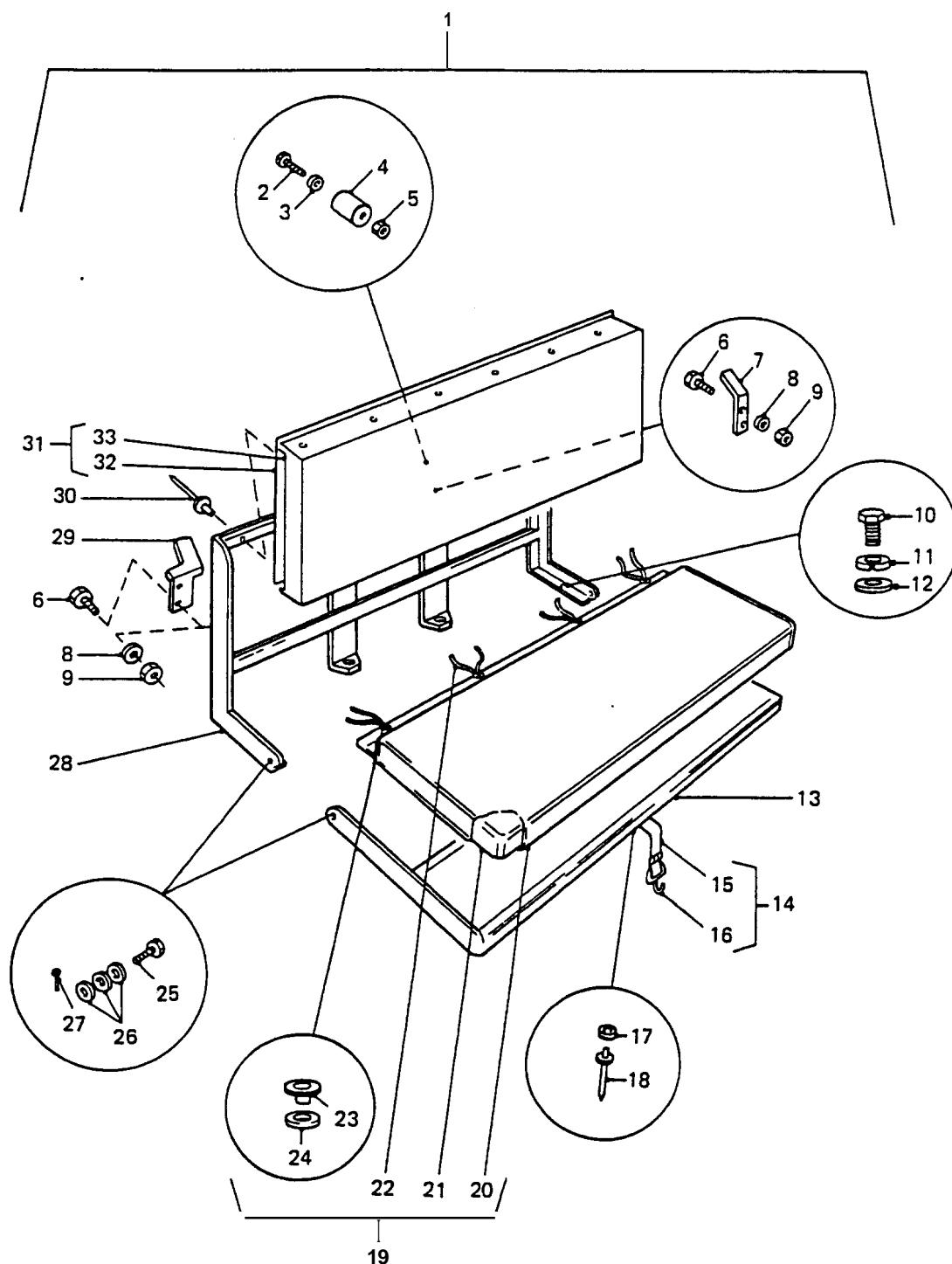
| ITEM NO | DESIGNATION | NSN MANUFACTURER CODE/PART NO SUPPLIER CODE/PART NO | NO OFF | U O | E X | L* M* H* |
|---------|---|---|-----------|--------|--------|----------------|
| 011 | WASHER, LOCK SPRING, STEEL, SINGLE TURN, ZINC PLATED, 10 MM ID, 15.90 MM OD, 2.50 MM THK | 5310 99-138-9228 U1030/WL110001L Z5394/WL110001L | 8 | EA | X | LMH |
| 012 | WASHER, FLAT 10.5 MM ID, 21 MM OD, 2 MM THK, RD, STEEL, ZINC PLATED | 5310 99-122-6476 U1030/WA110061 Z5394/WA110061 | 8 | EA | X | LMH |
| 013 | FRAME, REAR SEAT CUSHION STEEL, HINGED ON BOTH SIDES | 2540 66-128-4946 Z5394/HYG1698 Z5394/HYG1698 | 2 | EA | A | LMH |
| 014 | STRAP, WEBBING REAR SEAT CUSHION TO SQUAB (INCLUDES SS 015 AND SS 016) | 5340 66-128-4719 Z5394/HYG1833 Z5394/HYG1833 | 2 | EA | X | LMH |
| 015 | WEBBING, COTTON, 25 SECTION, 0.36 M (USE SS 014) | /NIL /NIL | 2 | | | |
| 016 | HOOK, STRAP. (ALSO PART OF SS 014) | U1030/301005 U1030/301005 | 2 | | | |
| 017 | WASHER, FLATROUND, STEEL, ZINC PLATED, 5 MM BOLT SIZE | 5310 99-122-3032 U1030/WA105001 Z5394/WA105001 | 2 | EA | X | LMH |
| 018 | RIVET, BLIND ALUMINIUM, UNIVERSAL HD, 3/16 IN DIA BY 11/16 IN SHANK LG | 5320 66-128-4721 Z5394/RU612503 Z5394/RU612503 | 2 | EA | X | LMH |
| 019 | CUSHION, SEAT, VEHICULAR REAR SEAT, 4X4 GS PERENTIE VEHICLES (INCLUDES SS 020 TO SS 024) | 2540 66-128-4947 Z5394/HYG1707 Z5394/HYG1707 | 2 | EA | A | LMH |
| 020 | COVER, TRIM, REAR SEAT CUSHION (USE SS 019) | /NIL /NIL | 2 | | | |
| 021 | PAD, REAR SEAT CUSHION (USE SS 019) | /NIL /NIL | 2 | | | |
| 022 | TIE, TAPE, CUSHION TO FRAME, FROM 0.60 M LG (USE SS 019) | /NIL /NIL | 8 | | | |
| 023 | EYELET (USE SS 019) | /NIL /NIL | 8 | | | |

ISSUE NO: 3

REPAIR PARTS SCALE: 02188

PAGE NO: 391

* GRADE OF REPAIR (LIGHT, MEDIUM OR HEAVY)



REAR INWARD FACING SEATS

GROUP SS
TITLE REAR INWARD FACING SEATS

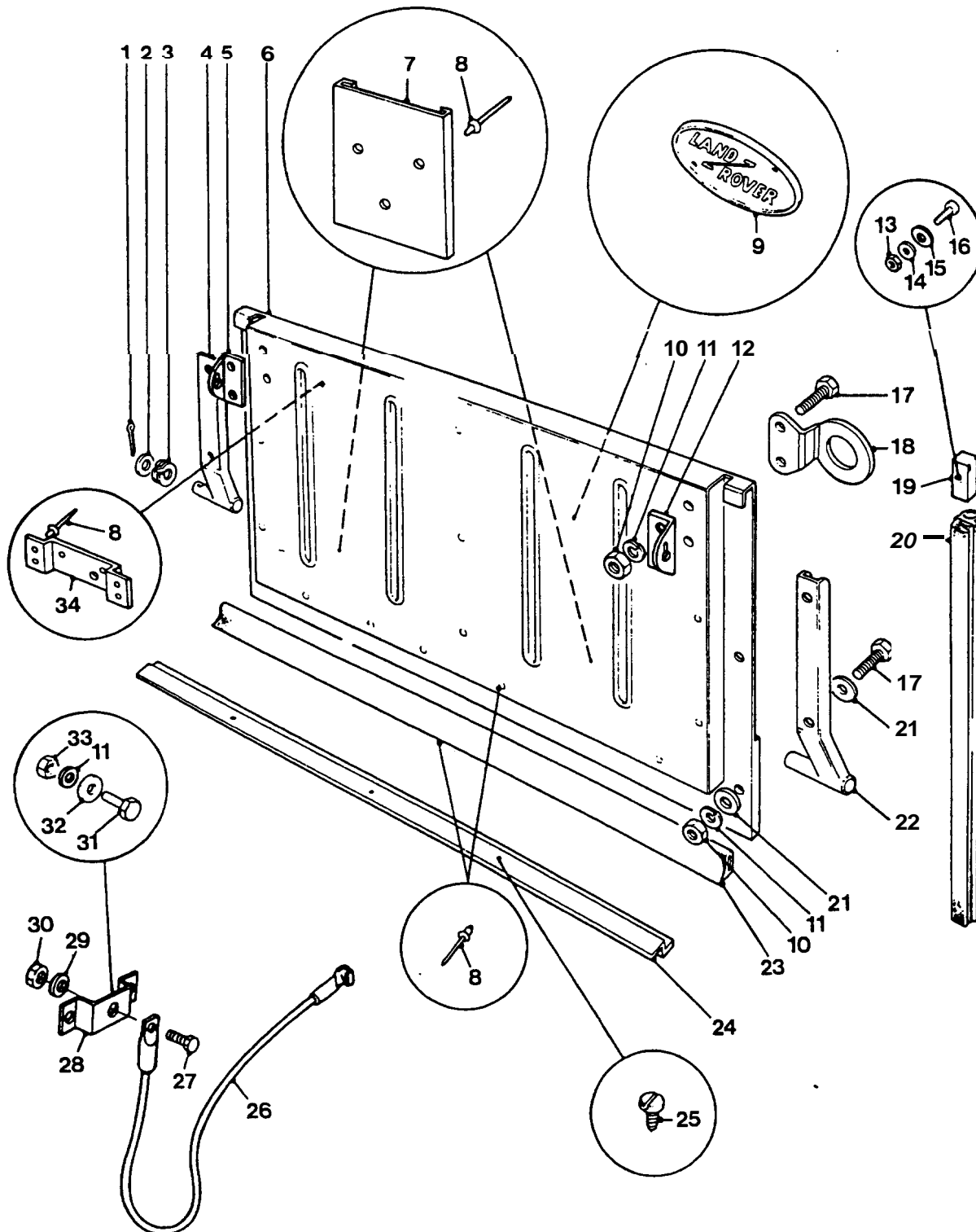
| ITEM NO | DESIGNATION | NSN MANUFACTURER CODE/PART NO SUPPLIER CODE/PART NO | NO OFF | U D I | E X P | L* M* H* |
|---------|---|---|-----------|-------------|-------------|----------------|
| 024 | WASHER, FLAT (USE SS 019) | /NIL /NIL | 8 | | | |
| 025 | PIN, STRAIGHT, HEADED STEEL, ZINC COATED, 8 MM DIA, 24 MM LG | 5315 66-128-4718 Z5394/PC108241 Z5394/PC108241 | 4 | A | X | LMH |
| 026 | WASHER, FLAT, ISO M, STEEL, RD, ZINC PLATED, 8 MM ID, 17 MM OD, 1.60 MM THK | 5310 99-122-6475 U1030/WB108051 Z5394/WB108051 | 12 | A | X | LMH |
| 027 | PIN, COTTER, 2 MM BY 12 MM LG, ZINC PLT | Z5394/PS104121 Z5394/PS104121 | 4 | | | LMH |
| 028 | FRAME, REAR SEAT SQUAB STEEL, C/W 2 REAR CENTRE: SUPPORTS, L/H | 2540 66-128-4948 Z5394/HYG1693 Z5394/HYG1693 | 1 | A | A | LMH |
| 029 | CLIP, SQUAB FRAME TO CAPPING, LEFT HAND | Z5394/MTC6453 Z5394/MTC6453 | 1 | | | |
| 903 | FRAME, REAR SEAT SQUAB FRAME, REAR SEAT SQUAB, RIGHT HAND, 4X4 GSPERENTIE VEHICLES | 2540 66-128-4949 Z5394/HYG1692 Z5394/HYG1692 | 1 | A | A | LMH |
| 030 | RIVET, BLIND ALUMINIUM, 3/16 IN DIA BY 1-9/16 IN LG | 5320 66-128-5117 Z5394/RA612253 Z5394/RA612253 | 20 | A | X | LMH |
| 904 | CLIP, SQUAB FRAME TO CAPPING, RIGHT HAND | Z5394/MTC6452 Z5394/MTC6452 | 1 | | | |
| 031 | CUSHION, SEAT BACK, VEHICULAR PLASTIC, VINYL, STEEL (INCLUDES SS 032 AND SS 033) | 2540 66-128-4950 Z5394/HYG1704 Z5394/HYG1704 | 2 | A | A | LMH |
| 032 | PLATE, BACKING, REAR SEAT SQUAB (USE SS 031) | /NIL /NIL | 2 | | | |
| 033 | COVER, TRIM, REAR SEAT SQUAB (USE SS 031) | /NIL /NIL | 2 | | | |

ISSUE NO: 3

REPAIR PARTS SCALE: 02188

PAGE NO: 392

* GRADE OF REPAIR (LIGHT, MEDIUM OR HEAW)



TAILBOARD AND FITTINGS

GROUP ST
TITLE TAILBOARD AND FITTINGS

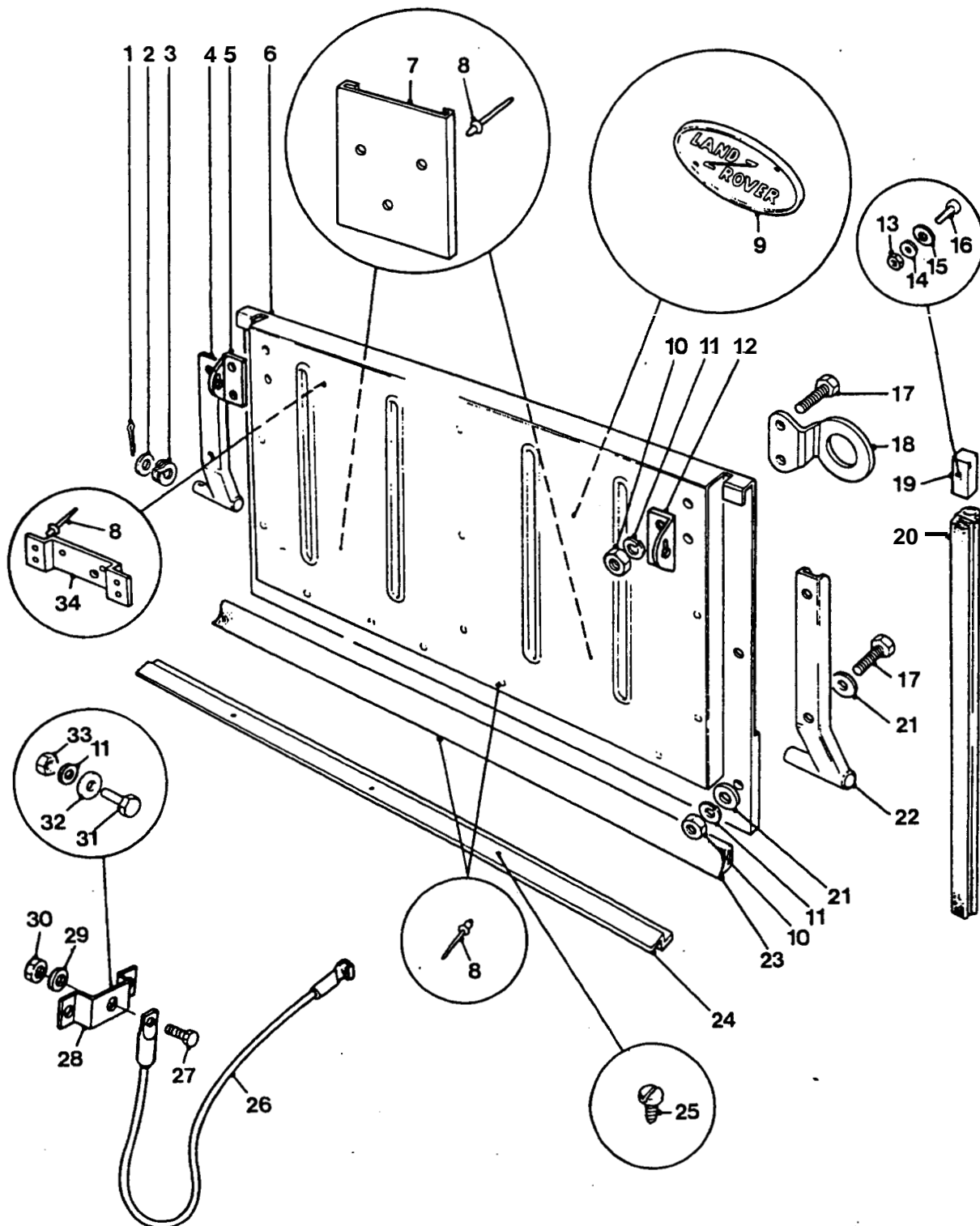
| ITEM NO | DESIGNATION | NSN MANUFACTURER CODE/PART NO SUPPLIER CODE/PART NO | NO OFF | U O I | E X P | L* M* H* |
|---------|---|---|-----------|-------------|-------------|----------------|
| 901 | TAILGATE, VEHICLE BODY (INCLUDES ST 004 TO ST 006, ST 010 TO ST 012, ST 017, ST 018, ST 021, ST 022 AND QTY 17 OF ST 008) | 2510 99-737-3366 U1030/MUC8736 25394/MUC8736 | 1EA | | A | LMH |
| 001 | PIN, COTTER SPLIT, STEEL, 5 MM NOM DIA, 25 MM LG | 5315 66-097-0345 Z5394/PS612080 Z5394/PS612080 | 1EA | | X | LMH |
| 002 | WASHER, FLAT RD, STEEL, ZINC COATED, SMALL, 9/16 IN BOLT SIZE, 1-1/8 IN OD, BY 0.104 IN THK | 5310 66-012-6841 Z5394/WA600091 Z5394/WA600091 | 1EA | | X | LMH |
| 003 | WASHER, LOCK DOUBLE COIL, STEEL, ZINC COATED, 9/16 IN | 5310 99-941-6632 U0716/WS600091 Z5394/WS600091 | 1EA | | X | LMH |
| 004 | HINGE, STRAP, TAILBOARD, STEEL, ZINC COATED, 13-1/2 IN APPROX O/A LG, RH (ALSO PART OF ST 901) | 5340 99-804-7197 U1030/MUC8740 Z5394/MUC8740 | 1EA | | X | LMH |
| 005 | BRACKET, ANGLE (ALSO PART OF ST 901) | 5340 99-737-3367 U1030/MUC8738 25394/MUC8738 | 1EA | | X | LMH |
| 006 | PANEL, REINFORCING TAILBOARD (ALSO PART OF ST 901) | Z5394/MUC8737 Z5394/MUC8737 | 1 | | | |
| 007 | HOLDER, VEHICLE UNIT AND FORMATION SIGN PLATE STEEL, PAINTED DEEP BRONZE GREEN, 6.094 IN LG, 0.297 IN O/A W, 6.000 IN H, W/3 RAISED MTG HOLES, TO SUIT | 2590 66-016-0815 25394/HYK2674 Z5394/HYK2674 | 2EA | | X | LMH |
| 008 | RIVET, BLIND ALUMINIUM ALLOY, DOME HD, MEM EX TYPE, 3/16 IN DIA, 7/16 IN LG (QTY 17, ALSO PART OF ST 901) | 5320 99-970-3518 U1030/78248 Z5394/R78248 | 30EA | | X | LMH |
| 009 | LOGO, LANDROVER, OVAL, SELF ADHESIVE, 195 MM LG, 95 MM W, SILVER LETTERS ON BLACK BACKGROUND (REFER GROUP SGD 026) | 25394/MXC6401 25394/MXC6401 | 1 | | | |

ISSUE NO: 3

REPAIR PARTS SCALE: 02188

PAGE NO: 393

* GRADE OF REPAIR (LIGHT, MEDIUM OR HEAVY)



TAILBOARD AND FITTINGS

GROUP ST
TITLE TAILBOARD AND FITTINGS

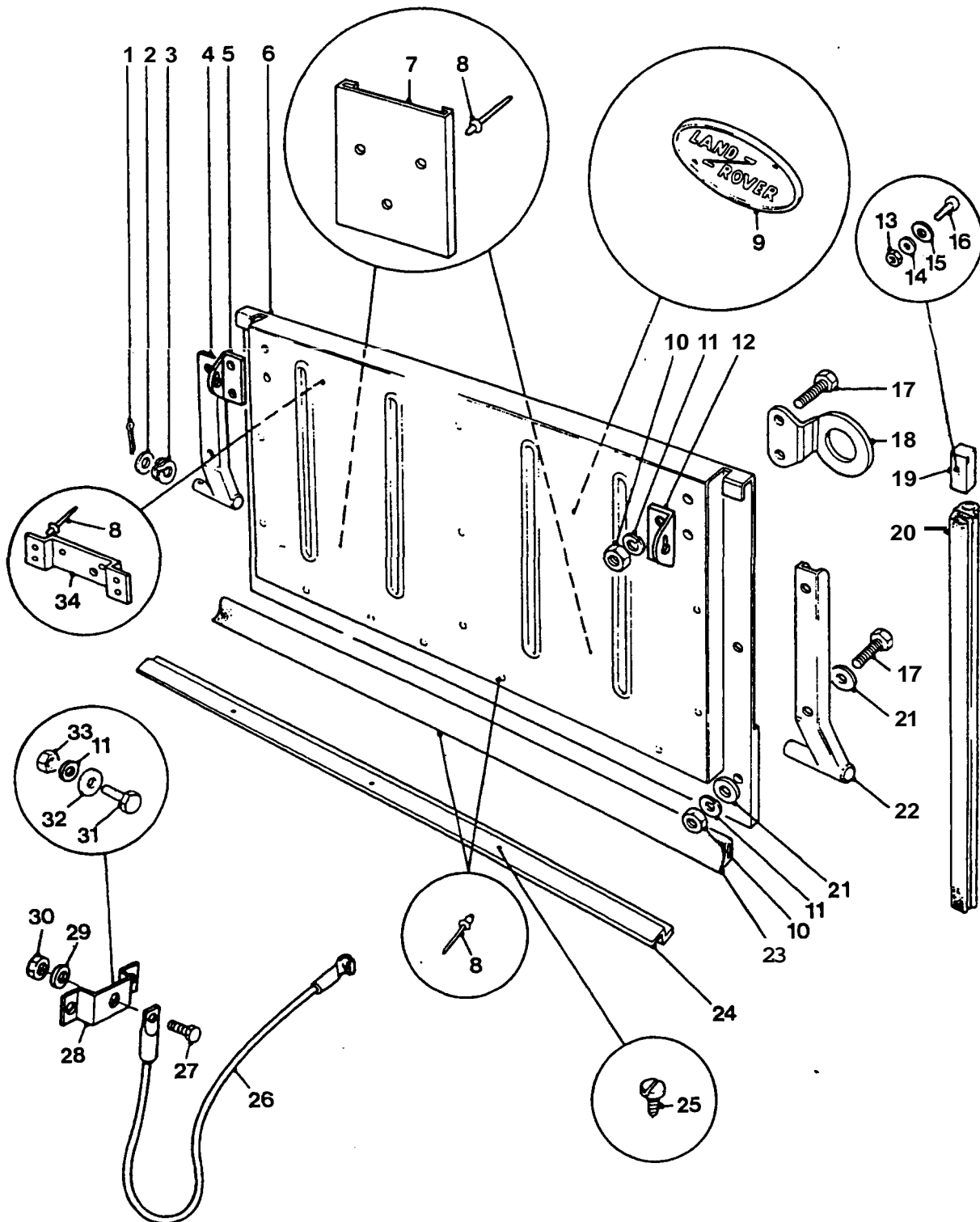
| ITEM NO | DESIGNATION | NSN MANUFACTURER CODE/PART NO SUPPLIER CODE/PART NO | NO OFF | U O | E X | L* M* H* |
|---------|--|---|-----------|--------|--------|----------------|
| 010 | NUT, HEX, 6 MM ID, COARSE, STEEL, MEDIUM TENSILE, ZINC PLATED (ALSO PART OF ST 901) | Z5394/JLM9687 Z5394/JLM9687 | 8 | | | |
| 011 | WASHER, LOCK STEEL, 6.10 MM ID, 9.70 MM OD, 1.50 MM THK (ALSO PART OF ST 901) | 5310 99-203-6405 U1030/WM106001L Z5394/WM106001 | 12 | EA | X | LMH |
| 012 | BRACKET, ANGLE (ALSO PART OF ST 901) | 5340 99-737-3368 U1030/MUC8739 Z5394/MUC8739 | 1 | EA | X | LMH |
| 013 | NUT, PLAIN, HEXAGON | 5310 99-122-6456 U1030/NH104041 Z5394/NH104041 | 2 | EA | X | LMH |
| 014 | WASHER, LOCK SPRING TENSION, 5 MM ID, ZINC PLATED | 5310 99-977-1102 U1030/WL105001 Z5394/WL105001 | 2 | EA | X | LMH |
| 015 | WASHER, FLAT RD, STEEL, ZINC PLATED, LARGE OD, 4 MM ID | 5310 99-759-2084 U1030/WC104001 Z5394/WC104001 | 2 | EA | X | LMH |
| 016 | SCREW, MACHINE O METRIC, 6G, STEEL, PANED, SLOT DRIVE, ZINC PLATED, 4 MM DIA, 0.70 MM PITCH, 16 MM LG | 5305 99-135-0423 U1030/SP104121 Z5394/SP104121 | 2 | EA | X | LMH |
| 017 | SCREW, CAP, HEXAGON HEAD METRIC, STEEL, HEX HD, 6 MM BY 55 MM LG (ALSO PART OF ST 901) | 5305 99-122-5249 U1030/SH106111 Z5394/SH106111 | 8 | EA | X | LMH |
| 018 | LOCKING PLATE, TAILBOARD VEHICLES (ALSO PART OF ST 901) | 2510 99-737-3373 U1030/MUC8746 Z5394/MUC8746 | 2 | EA | X | LMH |
| 019 | BUMPER, RUBBER SYNTHETIC, BLACK, 1-1/4 IN LG, BY 5/16 IN W, 19/32 IN THK (TRIM BLOCK TO FIT IF REQ,D) | 5340 99-805-4577 U1030/332146 Z5394/332146 | 2 | EA | X | LMH |
| 020 | WEATHER STRIP WEATHERSTRIP, LEFT HAND | 2510 99-757-5309 U1030/MTC4165 Z5394/MTC4165 | 1 | EA | X | LMH |
| 902 | WEATHER STRIP WEATHERSTRIP, RIGHT HAND | 2510 99-757-5308 U1039/MTC4164 Z5394/MTC4164 | 1 | EA | X | LMH |
| 021 | WASHER, FLAT STEEL, RD, 1/4 IN ID (ALSO PART OF ST 901) | 5310 66-128-4723 Z5394/MRC5528 Z5394/MRC5528 | 10 | EA | X | LMH |

ISSUE NO: 3

REPAIR PARTS SCALE: 02188

PAGE NO: 394

* GRADE OF REPAIR (LIGHT, MEDIUM OR HEAVY)



TAILBOARD AND FITTINGS

GROUP ST
TITLE TAILBOARD AND FITTINGS

| ITEM NO | DESIGNATION | NSN MANUFACTURER CODE/PART NO SUPPLIER CODE/PART NO | NO OFF | U O I | S X P | L* M* H* |
|---------|--|---|-----------|-------------|-------------|----------------|
| 022 | HINGE, TAILBOARD HINGE, TAILBOARD, STEEL, 5/8 IN BY 1-1/2 IN BY 13-1/2 IN O/A DIM, O/A (ALSO PART OF ST 901) | 2510 99-805-4562 U1030/MUC8741 Z5394/MUC8741 | 1EA | | X | LMH |
| 023 | WEATHER STRIP | 5680 99-849-8358 U1030/307975 Z5394/R303975 | 1EA | | X | LMH |
| 024 | STRIP, FLOOR PROTECTION STEEL, C/W 90 DEG.BENDS, C/W 3 HOLES FOR SCREWS | 2540 66-128-4962 Z5394/HYG2032 Z5394/HYG2032 | 1EA | | X | LMH |
| 025 | SCREW, TAPPING, THREAD FORMING | 5305 99-950-4416 Z5394/AB606041L Z5394/AB606041L | 7EA | | X | LMH |
| 026 | CABLE, RETAINING, TAILGATE WIRE ROPE/PLASTICS, W/PIN FITTING 1ST END, EYE SECOND END | 2540 99-737-8664 U1030/RRC5539 Z5394/RRC5539 | 2EA | | X | LMH |
| 027 | SCREW, CAP, HEXAGON HEAD ISO METRIC, STEEL, HEX HD, ZINC PLATED, 8 MM BY 35 MM | 5305 66-144-6480 U1030/FS108351 Z5394/FS108351 | 2EA | | X | LMH |
| 028 | STRAP, RETAINING TAILBOARD CABLE | 5340 99-737-2996 U1030/MUC8759 Z5394/MUC8759 | 2EA | | X | LMH |
| 029 | WASHER, FLAT, ISO M, STEEL, RD, ZINC PLATED, 8 MM ID, 17 MM OD, 1.60 MM THK | 5310 99-122-6475 U1030/WB108051 Z5394/WB108051 | 2EA | | X | LMH |
| 030 | NUT, HEX, 8 MM ID, COARSE, STEEL, MEDIUM TENSILE, ZINC PLATED | Z5394/NT108041 Z5394/NT108041 | 2 | | | |
| 031 | BOLT, MACHINE ISO M, STEEL, 6G THD CLASS, 6 MM THD DIA, 1 MM PITCH, 20 MM LG, ZINC PLATED | 5306 99-663-5061 U1030/FS106201 Z5394/FS106201 | 4EA | | X | LMH |
| 032 | WASHER, FLAT RD, STEEL, ZINC PLATED, 6 MM NOM BOLT SIZE, 12.50 MM OD, 1.60 MM THK | 5310 99-122-6474 Z5394/WA106001 Z5394/WA106001 | 4EA | | K | LMH |
| 033 | NUT, HEX, 6 MM ID, COARSE, STEEL, MEDIUM TENSILE, ZINC PLATED | Z5394/JLM9687 Z5394/JLM9687 | 4 | | | |
| 034 | BRACKET, MULTIPLE ANGLE STEEL, QUADRUPLE ANGLE | 5340 66-128-5022 Z5394/HYG2006 Z5394/HYG2006 | 1EA | | K | LMH |

ISSUE NO: 3 REPAIR PARTS SCALE: 02188 PAGE NO: 395

* GRADE OF REPAIR (LIGHT, MEDIUM OR HEAVY)